

## PRECAUTIONS

To avoid risks to man and the environment, comply with the instructions for use.

- USE ONLY AS DESCRIBED ON THE LABEL.
- KEEP OUT OF REACH OF CHILDREN.
- WASH HANDS AND EXPOSED SKIN AFTER USE.
- DO NOT BREATHE DUST.
- If medical advice is needed, have product container or label at hand.
- DO NOT contaminate foodstuffs, eating utensils or food contact surfaces.
- Cover water tanks before application.
- Remove or cover ALL fish tanks and bowls before application.
- THIS MATERIAL AND ITS CONTAINER must be disposed of safely.
- EXTREMELY DANGEROUS TO FISH AND OTHER AQUATIC LIFE.
- HAZARDOUS TO BEES.
- DO NOT CONTAMINATE watercourses.
- DO NOT empty into drains.
- ALL BATS ARE PROTECTED UNDER THE WILDLIFE AND COUNTRYSIDE ACT 1981. BEFORE TREATING ANY STRUCTURES USED BY BATS, CONSULT NATURAL ENGLAND, SCOTTISH NATURAL HERITAGE OR THE COUNTRYSIDE COUNCIL FOR WALES. FOR IRELAND ALL BATS ARE PROTECTED UNDER SCHEDULE 5 OF THE WILDLIFE ACTS (1976 AND 2000). BEFORE TREATING ANY STRUCTURE USED BY BATS CONSULT THE NATIONAL PARKS AND WILDLIFE SERVICE.
- KEEP IN ORIGINAL CONTAINER, tightly closed, in a safe place.
- Dispose of contents/container to normal household waste. However, if used in a place of work any product and empty container must be disposed of as controlled waste.

This product is approved under The Control of Pesticide Regulations 1986. Use only in accordance with the directions on the label.  
HSE 9753 F-BP-200-DOF  
PCS 97642



SBP200DPL

BATCH: SEE LABEL

**200g e**

**DOFF PORTLAND LIMITED**

Aerial Way, Hucknall, Nottingham. NG15 6DW

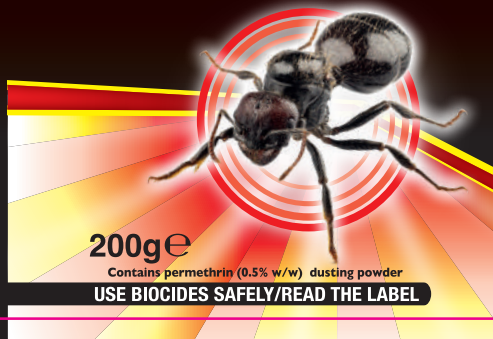
Tel: 0115 9834300 Web: www.doff.co.uk V2

© Copyright Design 2015



# CRACK & CREVICE ANT POWDER

For the Control of Ants, Cockroaches,  
Earwigs, Woodlice and other Crawling  
Insects in the Home and Garden



**DOFF® CRACK & CREVICE ANT POWDER** is an insecticide powder for use against ants, cockroaches, earwigs, woodlice and other crawling insects in domestic premises. For use indoors and outdoors, on floors, around cupboards, in cracks and crevices, along runs in and around nests, and at points of entry to the property.

### Directions for use

Keep container tightly closed when not in use.

Always shake the container well before and occasionally during use with cap closed. Shake pack gently, remove cap and pointing the nozzle downwards gently squeeze the container. Apply as a fine dust of powder to the floor, paying particular attention to corners, cracks and crevices and other places where insects are likely to hide, along insect runs. Puff powder freely in and around ant nests and sprinkle points of entry. If ants are invading premises apply powder to routes and points of entry. The nozzle can also be pointed inside cracks and crevices. Repeat treatments as necessary. Store in a cool dry place.

Replace cap after use.

WASH HANDS AFTER USE.

### STATUTORY CONDITIONS RELATING TO USE

FOR USE ONLY AS AN INSECTICIDE

**Application Method:** DUSTING POWDER

**Application Rate:** APPLY AT A RATE OF 20-40g OF PRODUCT PER SQUARE METRE.

Users must comply in full with all their legal responsibilities under the Control of Pesticides Regulations 1986 (as amended), including complying with all Conditions of Approval. For use as directed.

**READ ALL PRECAUTIONS BEFORE USE.**

HSE 9753

Contains 0.5% w/w PERMETHRIN. MAY CAUSE AN ALLERGIC REACTION.

Very toxic to aquatic life with long lasting effects.

To avoid risks to human health and the environment, comply with the instructions for use.



**WARNING**